

Equipment for Veterinary Rehab

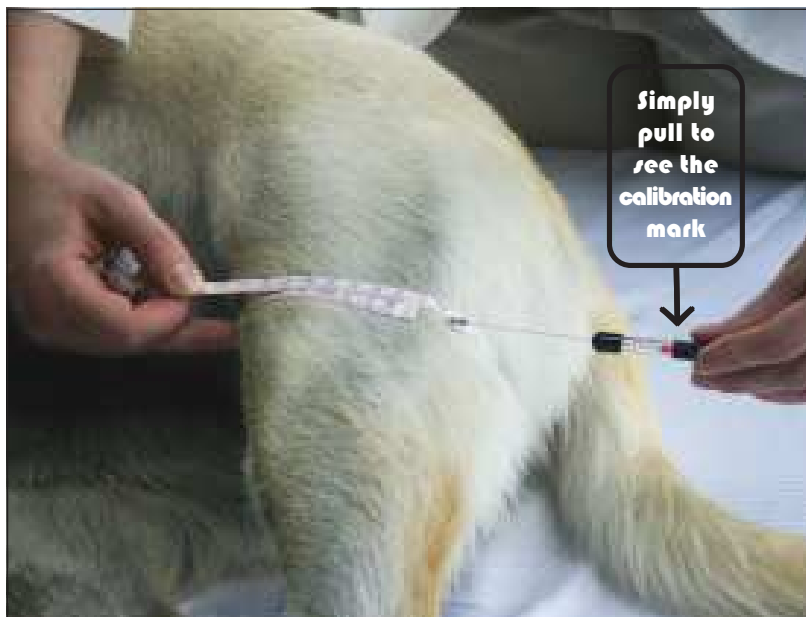


Lisa R. Peterson, DVM

Gulick II
Tape Measure



Gulick II Tape Measure



Leading Veterinarians in private practice, clinics & hospitals, **physical therapists** with a speciality in non-human anatomy, and **CCRPs** -- all insist on using our ***Gulick II Tape Measure*** for continuing assessment of muscular atrophy in their patients.

Health care professionals use the Gulick II for a thorough objective assessment in order to develop an appropriate rehabilitation protocol and to chart patient progress. (Accurate measurements replace subjective observations.)

Veterinary Specialties currently using the Gulick II:

- * Referral clinics
- * Veterinary teaching hospitals
- * Emergency and specialty centers

Why use the Gulick II?

- * Each Gulick II is individually calibrated to ensure the accuracy, repeatability, and consistent placement of tape tension
- * A standard tape measure or a non-calibrated tape measure will not provide the accuracy and repeatability critical to charting girth measurements
- * Provides important legal documentation of the animal's condition over the course of treatment

Gulick II Tape Measure

What is the Gulick II used for?

- * Initial pre-surgical evaluation of muscular atrophy
- * Assessment of long-term muscle atrophy to evaluate limb function
- * Repeatable, accurate girth measurement -- essential for weight management e.g. osteoarthritis
- * Quantifies the effectiveness of a given treatment by recording accurate numerical data
- * Accurate & repeatable limb circumference measurement is a quick and easy method of assessing changes in muscle mass -- the best indicator of treatment effectiveness

*It is **the instrument of choice** for pre-surgical measurement and subsequent follow-up visits.*



Gulick II Tape Measure for Accurate, Repeatable Measurement

Each Gulick II is individually calibrated -- available nowhere else!

Makes it easy for anyone to accurately and repeatably measure various body dimensions by applying a calibrated tension. The Gulick II uses a non-stretch, non-metallic, 72 inch (180 cm) long tape with both English and Metric gradations, and is push-button retractable.

With ordinary tapes the measurement will depend on how tightly the tape is pulled. Two consecutive measurements are usually quite different. If two or more people take the same measurement, the results rarely agree. The Gulick II completely eliminates this error.

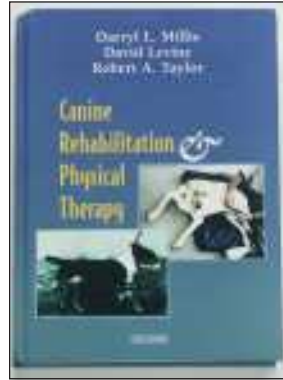
The exclusive Gulick II tensioning device is individually calibrated to provide a precise 4-ounce tension while a measurement is being taken. The stainless-steel compression spring guarantees that the calibration will last a lifetime, since it is impossible to "over-compress" a spring of this type. For the most accurate and repeatable measurements, only use a Gulick II Tape Measure. (Gulick II is a Country Technology Inc exclusive!)

Model 67020 Gulick II Tape Measure.....shipping weight 1 lb.....\$36.00

Rehab Book, Goniometers

Canine Rehabilitation & Physical Therapy

By Darryl L. Millis, David Levine, Robert A. Taylor



This one-of-a-kind resource bridges the gap between physical therapy and veterinary training. It provides an understanding of basic physical therapy techniques and interventions, empowering vets to effectively evaluate and treat dogs with debilitating conditions. Important legal and ethical issues are thoroughly examined and regulatory practices and collaborative relationships are clearly explained.

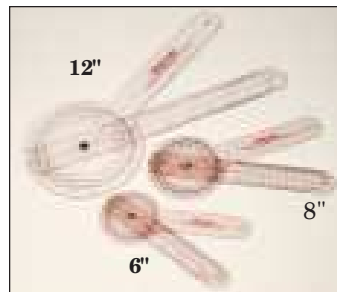
Key Features: Provides thorough coverage of physical therapy, from historical aspects to diagnosis and treatment. Presents proposed cases and specific therapies that can be used as guidelines for the management of clinical patients. Features an extensive chapter on the physical examination of the canine, with information ranging from general orthopedic assessment to surgery. Discusses the applications of aquatic therapy for dogs in a chapter devoted to this type of therapy. More than 300 illustrations highlight key concepts and procedures. Hardcover, 526 pages.

Model 23310.....Shipping weight 3 lbs.....\$99.95

Extendable Goniometer

This versatile goniometer is useful for both small and large joints. It has dual 180 degree scales and a 4x magnifying lens. Features a smooth precision glide and the stainless steel arms extend from 9" to 26".

Model 67072....Ship wt 1 lb.....\$96.00



Clear Plastic Goniometer

These inexpensive plastic goniometers are frequently used for X-rays. They have a 360° scale with 1° increments.

Model 67077...12".....wt 1 lb.....\$21.00

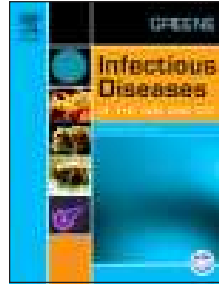
Model 67078...8".....wt 1 lb.....\$11.00

Model 67079...6".....wt 1 lb.....\$9.95

Selected Veterinary Books

Infectious Diseases of the Dog and Cat, 3rd Edition

By Craig E. Greene, DVM, MS



- An accompanying CD-ROM provides easy access to references for further research.
- Provides easy-to-use drug dosage tables.
- Provides key information on each drug to help adjust dosages on the basis of clinical and toxicologic data.

Featuring full-color illustrations and a user-friendly layout, this indispensable resource explores the diagnosis and treatment of canine and feline infectious diseases. Coverage includes diseases caused by viruses, rickettsiae, chlamydias, mycoplasmas, bacteria, fungi, algae, protozoa, and unknown agents.

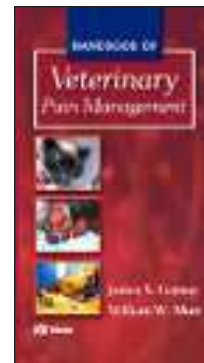
Each disease is accompanied by discussions of diagnostic testing, indications and methods for sample collection and laboratory submission, interpretation of results, and performance of in-office diagnostic procedures. Also included are a complete antimicrobial drug formulary, drug dosage tables, prescribing information, immunization recommendations, and a list of product manufacturers. August 2005; 1,356 pp, 400 illus; size: 8 1/2 X 10 7/8 in, Copyright 2005, Hardcover. **Model 23312**.....\$155.00

Handbook of Veterinary Pain Management

By James S. Gaynor, DVM, MS and William W. Muir, DVM, MSc

With a focus on veterinary pain management, this practical, quick-reference handbook provides an overview of pain and analgesia issues in small animals and horses. It offers comprehensive, concise coverage of important topics such as the recognition and assessment of pain, pharmacologic and non-pharmacologic pain management techniques, pain management for acute and chronic conditions, and the ethics of pain control. Clear explanations and descriptions are incorporated in an easy-to-use outline format, with visual diagrams for local and regional anesthetic techniques. Up-to-date drug facts and protocols, as well as an easily accessible drug dose table, put essential information within easy reach.

Additionally, specific case scenarios detail the use of multiple modalities for acute and chronic pain control in the clinical setting. © 2003; 496 pp, 81 illus; size: 4 5/16 X 7 3/8 in, Softcover. **Model 23314**.....\$54.95



Animal Scale & Vet Thermometer

Befour Professional Digital Veterinary Scale

The 42" x 22" platform sits just 1¾" off the ground, making it easy for animals to step on. Wonderfully consistent at both high and low weights, the this scale accurately weighs anything from 0 to 600 lbs. with ±0.1 lb.



precision. Stainless steel cover and slip-resistant rubber mat provide a secure footing, yet can be easily removed for cleaning. High-capacity tare and MotionLock features allow users to accurately weigh animals even when they are not being cooperative.

Features

- **Battery power for maxi portability.**
- **MotionLock is incredibly accurate -- even with a moving animal.**
- **Dual tare helps determine net weight.**
- **Low-profile platform - just 1¾" height**
- **Features easily replaceable USB cable**
- **Push-button calibration w/any sure weight over 100 lbs. No tools needed!**

Specifications

Capacity: 600 lbs. (270 kg.)
Accuracy: ±0.1 lb. (±0.1 kg.)
Platform Size: 42" x 22"
Platform Height: 1½"
Scale Weight: 50 lbs.
Readout Display: ¾" LED
Power Source: 6 C-cells
Auto Turn-Off: 4 min.
All-Metal Construction
3 year Warranty

Readout Console

mounts on a wall, angles on a counter, or lays flat. Brackets are included

- **Alkaline battery life provides over 80,000 weighings**
- **Programmable auto-off: 12 sec to 25 minutes**
- **Auto-zero, weight recall, reweigh, dual tare**
- **Audible sound when weight is "locked" in**
- **Weight readings in lbs or kg**
- **Battery life indicator**
- **Large 1" easy to read digits**
- **Durable anodized aluminum construction**

Model 69130 Pro Vet Scale.....oversize shipping, please call.....\$1095.00

Digital Veterinary Thermometer



This pen-type digital veterinary thermometer features: 10 second readings, jumbo dual scale (°F/°C), last reading memory, and auto-off.

It also is waterproof for easy cleaning; includes a lanyard and a 2 piece storage case. With 2 year manufacturer warranty.
Model 22550.....Ship wt 1 lb.....\$12.95

Photodynamic (Light) Therapy

Introducing the Lumen 90™ -- The most Advanced Photon Therapy Device Available!



For Large & Small Animals

The Lumen 90™ utilizes state-of-the-art technology to help activate the natural healing processes in the body. Superluminous light emitting diodes (LED's) produce photons at different wavelengths in the near-infrared/visible red spectrums. The FDA has approved this powerful, conveniently-sized device for:

- Increased local circulation
- Reduction of pain
- Improved range of motion
- Muscle relaxation

The Lumen 90™ application pad measures 4" x 8" and contains 90 LEDs -- fifty 200 mW IR(infrared) with an emission wavelength of 880nm and forty 3000mc SLDs(superluminous leds) with an emission wavelength of 650nm. The total ave. output is approximately 6.25 watts (maximal output power for minimal treatment times -- competitors often hide/inflate specs).

The controller pulses the LEDs at tissue specific frequencies as determined in the mid 1970s by a medical team headed by Dr. Paul Nogier. (The settings are used also in TENS units.) By pulsing at the specific frequencies of ectodermal, endodermal, and mesodermal tissues, we believe that the powerful Lumen 90™ heals faster while minimizing pain.

Model 22770.....Shipping weight 4 pounds.....\$950.00

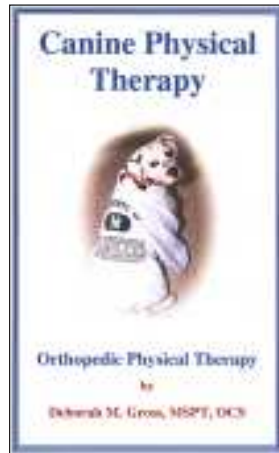
What Does Light Therapy Do?

- Increases the formation of capillaries, which speed up the healing process with more oxygen and nutrients.
- Stimulates the production of collagen, which is essential for repairing damaged tissue.
- Stimulates the release of adenosine triphosphate (ATP) which increases the energy level in the cells -- promotes faster nutrient uptake & waste product removal.
- Increases lymphatic system activity.
- Stimulates fibroblastic activity.
- Raises the temperature of the cells even though there is no heat produced from the diodes themselves.



The advanced controller generates Nogier Pulse Frequencies for superior therapeutic results.

Physical Therapy Book, Sanitation



Canine Physical Therapy

by Deborah M. Gross, MSPT, OCS

This book is an innovative and insightful approach to animal therapy from the vantage point of over 33 years of experience as a physical therapist. Areas covered include: Basic evaluation of the orthopedic canine patient, Evaluation of the forelimb, Evaluation of the hindlimb, Therapeutic exercises, Joint mobilization of the spinal and peripheral joints, common ailments and treatment of the forelimb, and common ailments and treatment of the hindlimb.

This book has over 300 pages of hands-on treatments for the canine physical therapy patient. **Model 23320**.....wt 2 lbs.....\$45.00

SANI-Hands® Antimicrobial Hand Wipes with PCMX and Aloe -- for professional/hospital use

Vets are in contact with pets and people constantly. You can insure superior health practices by using these pre-moistened Sani-Hands® Antimicrobial Hand Wipes that kill infectious pathogens with just a 15 second wipe - - and hands are dry in only 3 to 5 seconds. Contains: 65.9% alcohol, glycerin, glycol, and aloe gel.



Model 16250, Quick-Pull Canister (135 wipes).....ship wt 2 lbs.....\$13.50
Model 16255, Pocket Packets (100 wipes).....ship wt 2 lbs.....\$9.95
Model 16251, Case of 12 Canisters.....ship wt 17 lbs.....\$142.50
Model 16256, Case of 10 Boxes of Pocket Packets.....wt 11 lbs.....\$82.50

Latex Exam Gloves -- lightly powdered



These gloves are 100% inflation inspected, non-sterile, ambidextrous, 9" long, smooth. 100 per box (50 pairs). 1 lb. **Model 55515**, small; **Model 55516**, medium; **Model 55517**, large ... (select any size).....\$12.50

Glove box holders, steel w/white finish
#55512, 10 3/4 x 3 1/8"\$12.95
#55513, 11 1/8 x 3 1/2"\$12.95

Rehab & Thermal Therapy

Physio-Roll™ -- Designed for comfort & control



Model 71120	30 cm	\$65.00
Model 71121	40 cm	\$72.00
Model 71122	55 cm	\$90.00
Model 71123	70 cm	\$135.00
Model 71124	85 cm	\$150.00
Model 71125	Inflator	\$112.00

Roughly “peanut-shaped”. Used to actively assist with stance, weight bearing, & weight shifting. More lateral stability than a round ball.

Cando® Balance Boards



These sturdy balance boards are designed to improve ankle ROM, facilitate balance and body awareness, and lead to better joint mobility and reaction skills. Feature non-slip gripper treads. Higher boards increase difficulty. 4 lbs.

- 72220** Round, Intermediate 2" ball.....\$48.00
- 72221** Round, Advanced 3" ball.....\$48.00
- 72223** Square, Basic 2" flat bottom.....\$36.00
- 72224** Square, Intermed. 2" round bottom....\$39.00
- 72225** Square, Advanced 3" round botm...\$42.00



Flexi-PAC™

Hot & Cold Compress

Microwave or freeze -- the non-toxic flexible gel and vinyl conform to any body contour. 5 x 10"

Model 70622....wt 2 lbs....\$22.95

Snuggle Safe Heat Pad

Microwave for just 5 minutes and place the pad under the bedding. Made from non-toxic material and



will not leak or burst. Maintains a cozy 52 degree C temperature for up to 12 hours. Approved by vets and trainers world wide. 8.5" diameter.

Model 22500.....wt 3 lbs.....\$55.30



CoIPac® -- Non-toxic, pliable silica gel pack

This 11" x 14" reusable cold pack provides up to 30 minutes of soothing relief. Easily conforms to body areas and shapes. To always be ready for use, simply store it in the freezer.

Model 70630.....Shipping weight 2 lbs.....\$24.99

Charts and Models

Canine Charts and Models



Skeletal Anatomy
Model 23403



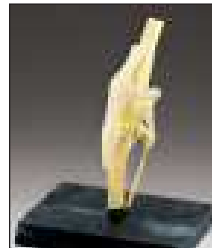
Muscular Anatomy
Model 23404



Internal Anatomy
Model 23405

Laminated charts measure 26 x 20"; priced separately at \$19.95 each...
Save on the complete set of 3 Canine charts, **Model 23410**.....\$49.95

Canine Knee



This model shows the femur, fibula, patella and tibia bones, lateral and medial meniscus, anterior and posterior cruciate ligaments, plus 6 more ligaments and ten-

dons. Includes key card. Size: 2" x 3.5" x 7".
Model 23501...Ship weight 3 lbs...\$120.00



Shoulder,
Model 23503.....\$135

Hip
Model 23502.....\$145

Feline Chart and Model



Feline Skeletal System

Detailed illustration of the animal and its skeletal system is the focus although details of the skeletal system and specific diseases are also illustrated. Chart measures 26" x 20" and is printed on high quality heavy paper with flexible lamination. **Model 23402**.....\$19.95



Bosley Big Cat Skeleton

Bosley Big Cat Skeleton's head and tail are removable. Skeleton is mounted to the base. Dimensions are 27"x12".

Model 23510.....Ship wt 5 lbs.....\$97.50

More Canine Models Call for further info...

Order Form

ORDERED BY:

Name _____
 Address _____
 City/State/Zip _____
 Daytime phone (____) _____ E-mail _____

SHIP TO (if different from above):

Name _____
 Address _____
 City/State/Zip _____
 Daytime phone (____) _____ E-mail _____

Item #	Qty.	Description	Item price	

METHOD OF PAYMENT:

- Check enclosed (U.S. funds, no CODs)
 MasterCard VISA
 Discover AMEX

Card # _____
 Exp. Date _____ CIN _____
 Signature _____

Credit card orders are not charged until shipped. Orders may be held for checks to clear.

Question? Need to Order?
 Call 8 am - 5 pm Central Time
 Mon thru Fri. fax / e-mail anytime

Merchandise total	
Shipping (see below)	
Subtotal	
WI add 5.5% sales tax	
TOTAL	

Thank you for your order!

Would a friend like to receive our flyer? Just send us their name and mailing information:

Shipping Information

Most orders ship within 2 days of their receipt. Please allow up to 2 weeks for delivery. We use the most efficient carrier for deliveries in your area. International orders ship by weight via First Class Postal Service.

Shipping/Handling, Insurance, Sales Tax ...Easy as 1, 2, 3

1) Shipping/Handling Charges:	2) Insurance Charges:	3) Sales Tax:
0 to 2 lbs \$10.00 (\$11.65)	Add \$2.00 for first \$200 value; add \$0.50 per \$100	Wisconsin customers only, add 5.5% of sub total
3 to 6 lbs \$12.00 (\$14.00)		
7 to 15 lbs \$14.00 (\$16.00)		
16 to 30 lbs \$18.00 (\$24.00)		
31 to 48 lbs \$22.00 (\$34.00)		
*** Please call for 3 day shipping charges. ***		
West Coast use second \$ column. Call for heavy items/next day/2nd day/3 day charges		

**** International Orders:** Prepayment is required in U.S. Dollars -- wire transfer is preferred.



Country Technology, Inc.

P.O. Box 87 Gays Mills, WI 54631
(608) 735 - 4718 Fax: (608) 735 - 4859
E-mail: ctech@mwt.net

For physical therapists and fitness trainers (non-vet)...
Visit our fitness website: www.fitnessmart.com
Call for our free 42 pg fitness and rehab catalog: "Vital Signs"

TO:

3 John 1:2 Beloved, I pray that in all respects you may prosper and be in good health, just as your soul prospers.